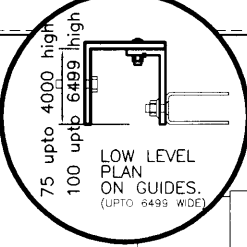


Any obstruction preventing the expansion of the shaft in a fire situation must be drilled through.



WIDTH "W"	SIDEROOM "X1"	SIDEROOM "X2"
0 - 4499	150	150
4500 - 6499	175	175

SIZE OF BLAZEGUARD 2000	CLEARANCE OF GUIDE FROM FLOOR "C"
BELOW 3000 WIDE & 3000 HIGH	0 (EXPANSION UPWARDS) ALLOW FOR 10mm PER LINEAR METRE IN HEIGHT
ABOVE 3000 WIDE OR 3000 HIGH	EXPANSION DOWNWARDS ALLOW FOR 10mm PER LINEAR METRE IN HEIGHT

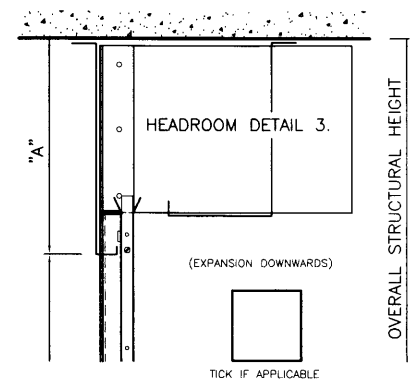
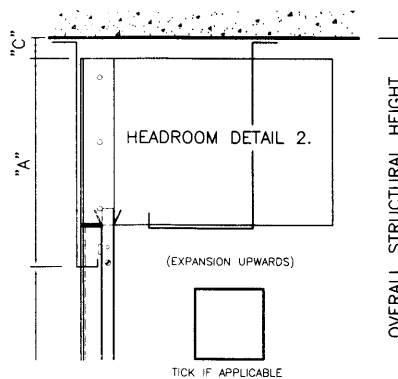
CLEAR HEIGHT "H" (NORMAL COIL)	HEADROOM "A" (NORMAL COIL)	HEADROOM "B1"
0 - 3499	450	610
3500 - 4749	500	610
4750 - 5999	550	685
6000 - 6499	600	860

ORDER No.:— _____

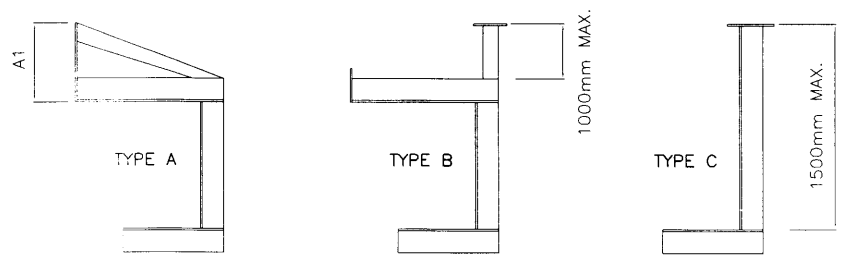
QUANTITY:— _____

HANDING:— _____ L/H, R/H (right hand shown).

SURROUNDING STRUCTURE:—
 This must be a fire-resistant separating element (to B.S.476 PART 20,21,22: 1987) & have a fire resistance > or = to the doorset itself.
MASONRY: insulation, integrity & loadbearing capacity criteria of B.S.476: PART 21:1987. all masonry elements must be designed in accordance with B.S 562: PART 3:1985 (code of practice for use of masonry) and have a density > 600Kg/cubic Metre
LINTOLS: should comply with B.S. 8110 (structural use of concrete): PART 1:1997 (code of design for design and construction).



OPNG. SIZE (W X H) UPTO	TYPE A	QUANTITY REQUIRED
	A1	
CHAIN OP.		
3000 X 3000	325	1
4500 X 4250	372	2
5000 X 5000	376	3
ELEC OP.		
3000 X 3000	325	1
4500 X 4250	372	2
5000 X 5000	376	3
6000 X 5000	376	5
7000 X 3750	430	6



CANOPY/BARREL SUPPORT BRACKETS ARE SUPPLIED ON ALL DOORS ABOVE 2200mm. PLEASE SPECIFY WHICH TYPE OF BRACKET YOU REQUIRE. IF TYPE B OR TYPE C SPECIFIED, PLEASE STATE HEADROOM DIMENSION.

CANOPY/BARREL SUPPORT BKT:
 The barrel support brackets should be fixed symmetrically with respect to the opening centreline.

ZONE	REV	DESCRIPTION	DATE	APPROVED	
BG	H	ALTERED TO GAROG MOTOR DETAILS	27/12/07	27/12/07	
		CLIENT / SITE			
		DESCRIPTION			
		INDUPART ELECTRIC OPERATED BLAZEGUARD 2008 BETWEEN FIX BRICK GENERAL ARRANGEMENT DETAILS			
indupart		SIZE	CONTRACT No.	DWG NO.	REV
		J		BG114 / 01 (G.A)	H
DWN BY:		S.B./J.E	DATE:		