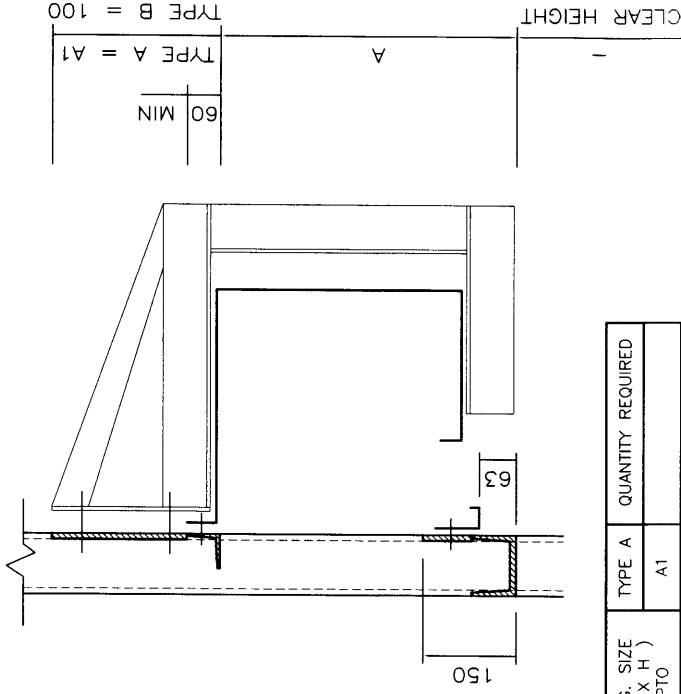


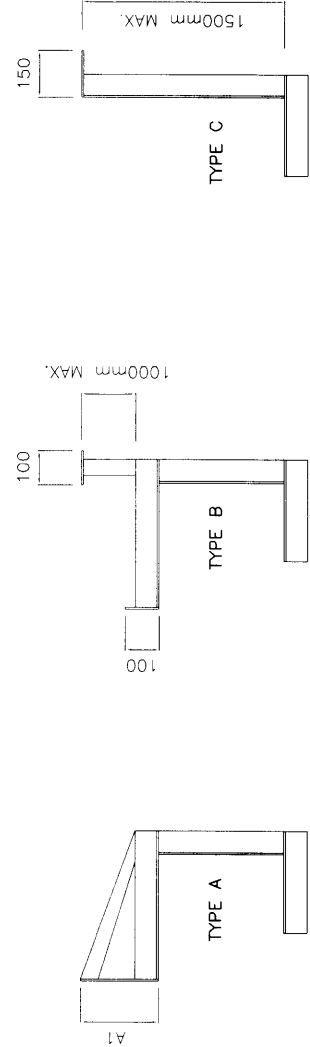
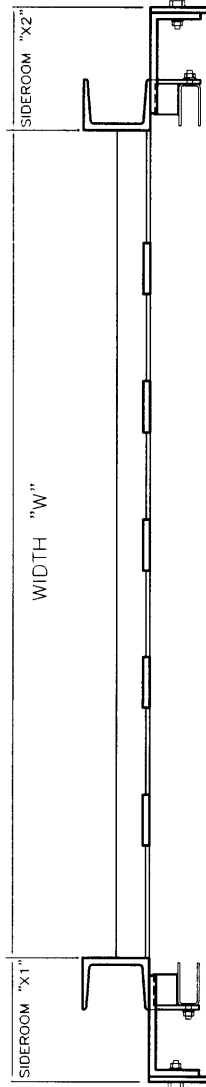
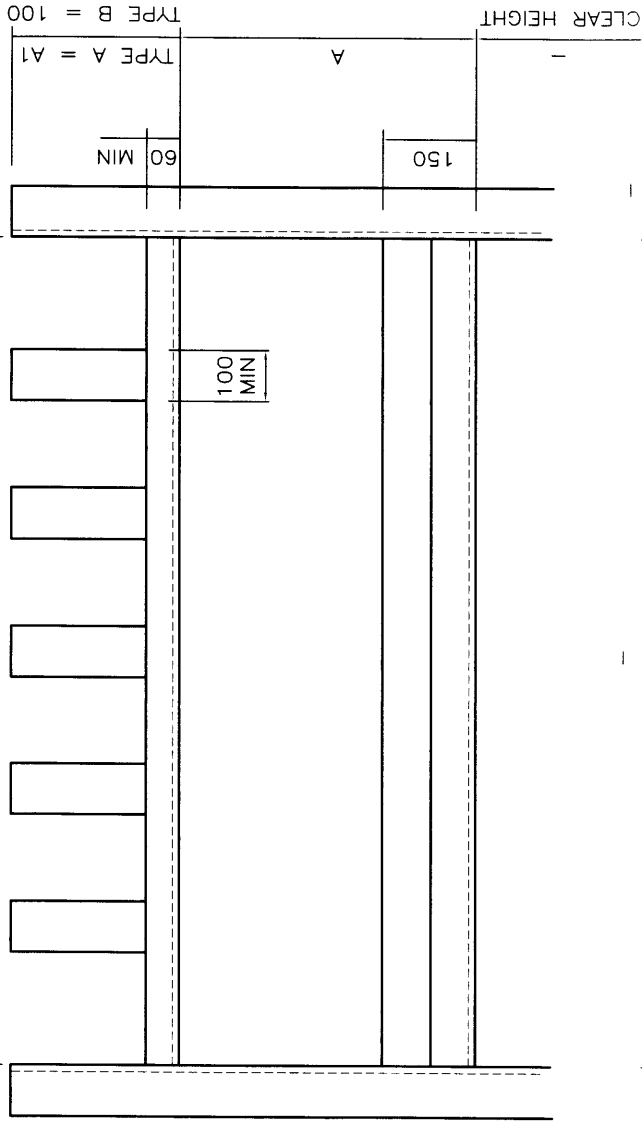
TYPE A SUPPORT BRACKET IS SUPPLIED AS STANDARD, UNLESS SPECIFIED OTHERWISE.



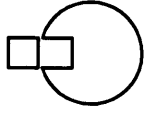
CLEAR HEIGHT "H" (NORMAL COL)	HEADROOM "A" (NORMAL COL)
0 - 3499	450
3500 - 4749	500
4750 - 5999	550
6000 - 6499	600

OPNG. SIZE (W X H) UPTO	TYPE A	QUANTITY REQUIRED
CHAIN OP.	A1	
3000 X 3000	325	1
4500 X 4250	372	2
5000 X 5000	376	3
ELEC OP.		
3000 X 3000	325	1
4500 X 4250	372	2
5000 X 5000	376	3
6000 X 5000	376	5
7000 X 6499	430	6

CANOPY/BARREL SUPPORT BKT:
The barrel support brackets should be fixed symmetrically with respect to the opening centreline.



CANOPY/BARREL SUPPORT BRACKETS ARE SUPPLIED ON ALL DOORS ABOVE 2200mm. PLEASE SPECIFY WHICH TYPE OF BRACKET YOU REQUIRE. IF TYPE B OR TYPE C SPECIFIED, PLEASE STATE HEADROOM DIMENSION.



indupart

CLIENT / SITE
-

DESCRIPTION
INDUPART BLAZEGUARD 2008 STEELWORK DETAILS FOR FRONT FIRE PANEL, CANOPY & SUPPORT BRACKET(S).

SIZE CONTRACT No. **J** DWG No. **BG113 / 07** REV **-**

DWN BY: **J.E** DATE: **28/12/07**