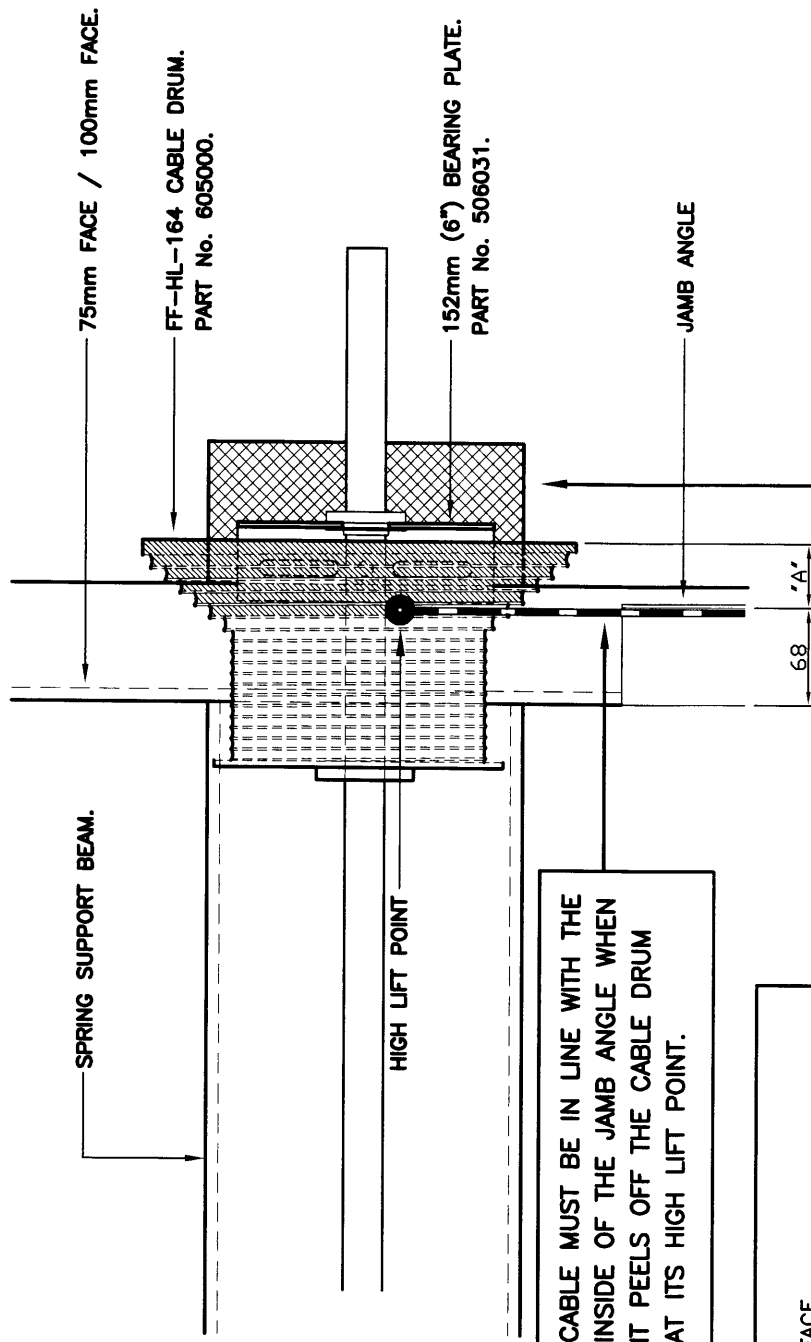


ZONE		REV	DESCRIPTION	DATE	APPROVED
S.O.D		A	EXTRA STEEL WORK DETAIL ADDED.	9/7/02	9/7/02

REVISIONS	
ZONE	REV
S.O.D	A

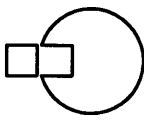
HIGH LIFT	DIM A
250mm	59mm approx.
500mm	52mm approx.
750mm	49mm approx.
1000mm	47mm approx.
1250mm	45mm approx.
1500mm	42mm approx.
1750mm	39mm approx.
2000mm	34mm approx.
2250mm	31mm approx.
2500mm	29mm approx.
2750mm	27mm approx.
3000mm	25mm approx.
3250mm	23mm approx.
3500mm	22mm approx.
3750mm	20mm approx.
4000mm	17mm approx.
4100mm	15mm approx.



CABLE MUST BE IN LINE WITH THE INSIDE OF THE JAMB ANGLE WHEN IT PEELS OFF THE CABLE DRUM AT ITS HIGH LIFT POINT.

2" TRACK. 75mm STEEL FACE. IF HIGH LIFT IS GREATER THAN 3500mm IF DIMENSION "A" IS GREATER THAN 22mm NO EXTRA STEEL WORK IS REQ'D FOR FIXINGS SUPPLIED BY OTHERS.	2" TRACK. 75mm STEEL FACE. IF HIGH LIFT IS LESS THAN 3500mm IF DIMENSION "A" IS LESS THAN 22mm EXTRA STEEL WORK IS REQ'D FOR FIXINGS SUPPLIED BY OTHERS.
---	--

2" TRACK. 100mm STEEL FACE. IF HIGH LIFT IS GREATER THAN 1000mm IF DIMENSION "A" IS GREATER THAN 47mm NO EXTRA STEEL WORK IS REQ'D FOR FIXINGS SUPPLIED BY OTHERS.	2" TRACK. 100mm STEEL FACE. IF HIGH LIFT IS LESS THAN 1000mm IF DIMENSION "A" IS LESS THAN 47mm EXTRA STEEL WORK IS REQ'D FOR FIXINGS SUPPLIED BY OTHERS.
--	---



indupart

CLIENT / SITE	FF-HL-164 INBOARD MOUNT CABLE DRUM DETAILS
DESCRIPTION	
SIZE	CONTRACT No.
DWN BY:	J
DWG NO.	SOD030
REV	A
DATE:	9/7/02
J.E	DATE:
© indupart 2002	