

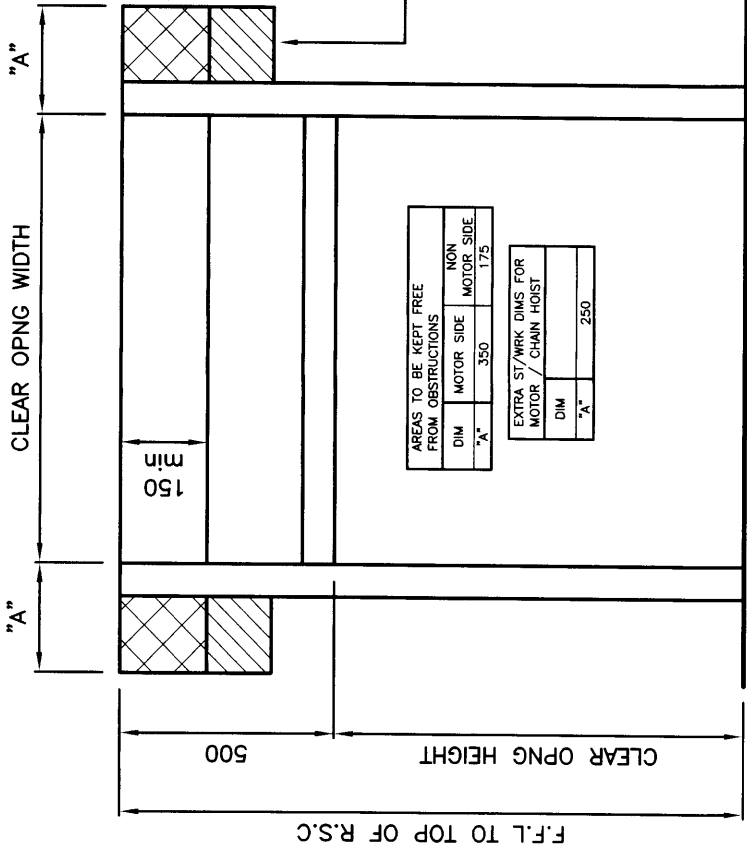


CLEAR OPNG HEIGHT	DIM "B"
0 - 3680	0
3680 - 5500	30
5500 - 6000	65

SHADED AREAS:-
TO BE KEPT FREE FROM
OBSTRUCTIONS.
EXTRA ST/WRK REQ'D
FOR MOTOR / CHAIN HOIST.

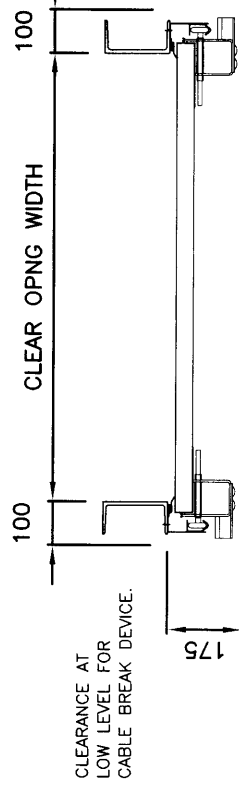
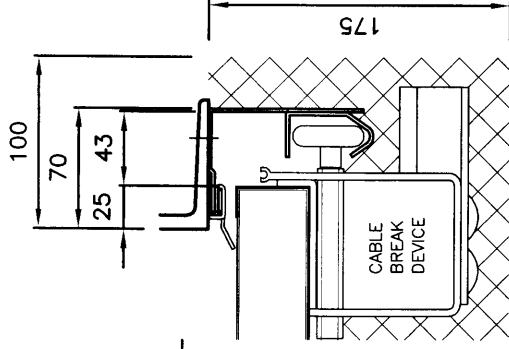
SHADED AREAS:-
EXTRA ST/WRK REQUIRED
801000 CHAIN HOIST
REFER TO DWG PN801000.

ALL ST/WRK MUST
BE PLUMB VERTICAL
& FLUSH.



AREAS TO BE KEPT FREE FROM OBSTRUCTIONS	
DIM MOTOR SIDE	350
DIM NON MOTOR SIDE	175

EXTRA ST/WRK DIMS FOR MOTOR / CHAIN HOIST	
DIM "A"	250



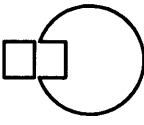
All dimensions in mm, unless specified. Tolerance + or - 5mm.
All dimensions are based on Kingspan standard 40mm thick panels & standard 51mm (2") track.

CLIENT O/No.	
QUANTITY	
OPERATION	ELEC / CHAIN / PUSH UP
HAND OF OPERATION	
VIEWED FROM INSIDE (V.F.I)	LH / RH
POWER SUPPLY (if elec)	1PH / 3PH
PANEL FINISH	POLYESTER / PLASTISOL
EXTERNAL COLOUR & REFERENCE:-	
INTERNAL (RAL 9010 WHITE STD)	
WICKET DOOR REQ'D	YES / NO
(positioned centrally)	
WICKET DOOR HINGE (V.F.I)	LH / RH
VISION PANELS	No. ROWS OF _____ WINDOWS
IN _____ + _____	PANEL(S) FROM BOTTOM
OTHER:-	

SHADED AREA TO BE KEPT FREE FROM OBSTRUCTIONS.

F.F.L (40mm panel)

THE INTERNAL THRESHOLD SHOULD BE SMOOTH & LEVEL. IT IS ADVISED THAT THE EXTERNAL THRESHOLD SLOPES AWAY FROM THE OPENING TO HELP PREVENT WATER INGRESS.



indupart

CLIENT / SITE :

DESCRIPTION :
INSTALLATION CLEARANCES - STANDARD LIFT
c/w TRACK PITCH - 40mm THICK PANEL

DATE :	DWG NO.	REV
		A
DRAWN BY :	J.E	SHEET
	INSTALL 7	

© Indupart 2008