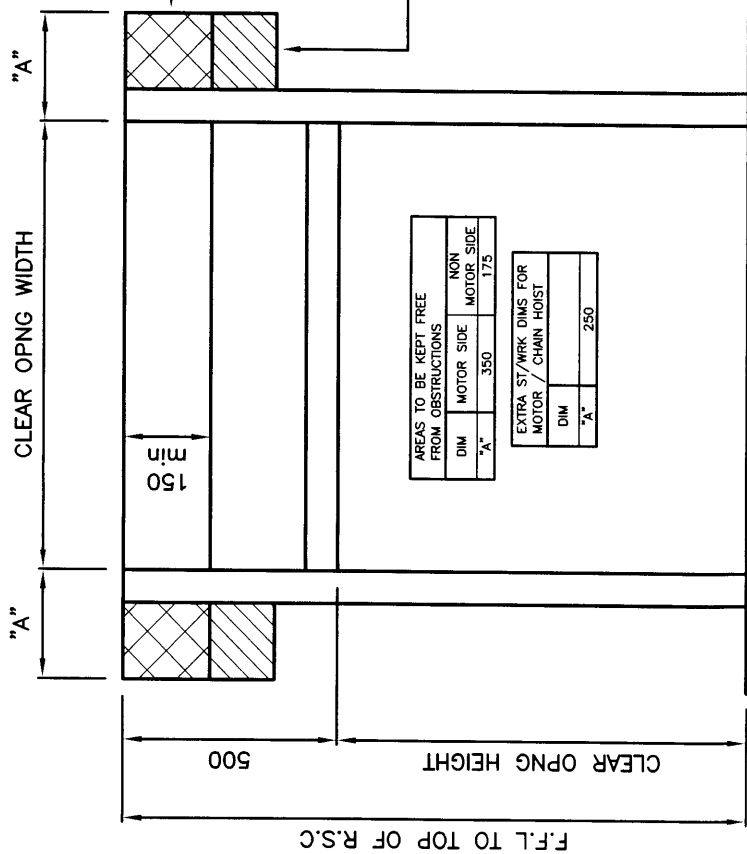


CLEAR OPNG HEIGHT	DIM "B"
0 - 3660	0
3660 - 5500	30
5500 - 6000	65

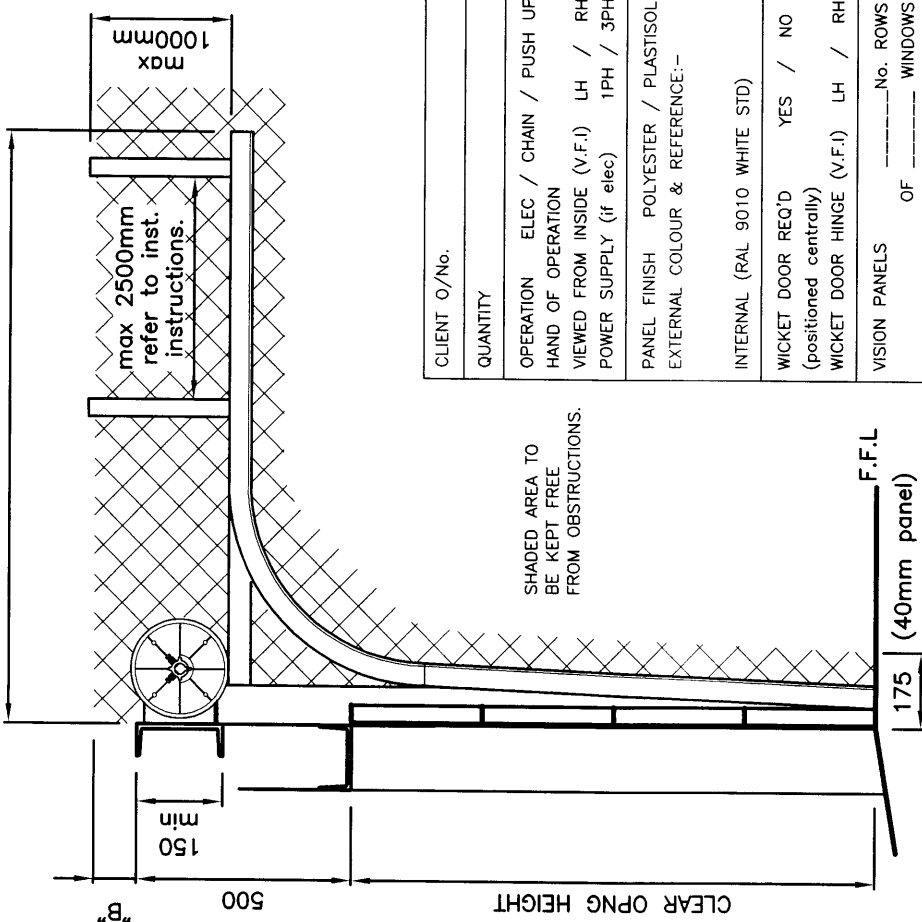


SHADED AREAS:- TO BE KEPT FREE FROM OBSTRUCTIONS. EXTRA ST/WRK REQ'D FOR MOTOR / CHAIN HOIST.

SHADED AREAS:- EXTRA ST/WRK REQUIRED 801000 CHAIN HOIST REFER TO DWG PN801000.

ALL ST/WRK MUST BE PLUMB VERTICAL & FLUSH.

CLEARANCE INTO BUILDING = HEIGHT + 550



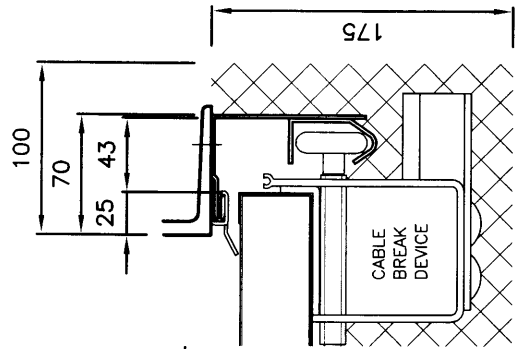
max 2500mm refer to inst. instructions.

SHADED AREA TO BE KEPT FREE FROM OBSTRUCTIONS.

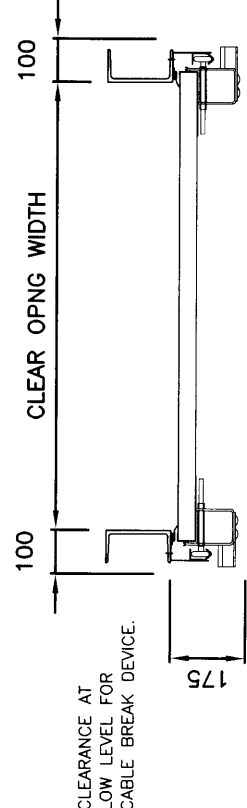
F.F.L (40mm panel) 175

CLIENT O/No.	
QUANTITY	
OPERATION	ELEC / CHAIN / PUSH UP
HAND OF OPERATION	VIEWED FROM INSIDE (V.F.I) LH / RH
POWER SUPPLY (if elec)	1PH / 3PH
PANEL FINISH	POLYESTER / PLASTISOL
EXTERNAL COLOUR & REFERENCE:-	
INTERNAL	(RAL 9010 WHITE STD)
WICKET DOOR REQ'D	YES / NO
(positioned centrally)	
WICKET DOOR HINGE (V.F.I)	LH / RH
VISION PANELS	No. ROWS OF _____ WINDOWS
IN _____ + _____ PANEL(S) FROM BOTTOM	
OTHER:-	

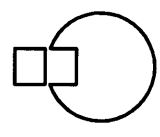
THE INTERNAL THRESHOLD SHOULD BE SMOOTH & LEVEL. IT IS ADVISED THAT THE EXTERNAL THRESHOLD SLOPES AWAY FROM THE OPENING TO HELP PREVENT WATER INGRESS.



CLEARANCE AT LOW LEVEL FOR CABLE BREAK DEVICE.



CLEARANCE AT LOW LEVEL FOR CABLE BREAK DEVICE.



**indupart**

CLIENT / SITE :	
DESCRIPTION :	INSTALLATION CLEARANCES
	STANDARD LIFT - 40mm THICK PANEL
DATE :	
DRAWN BY :	J.E SHEET
DWG NO.:	INSTALL 6
REV	A

All dimensions in mm, unless specified. Tolerance + or - 5mm. All dimensions are based on Kingspan standard 40mm thick panels & standard 51mm (2") track.