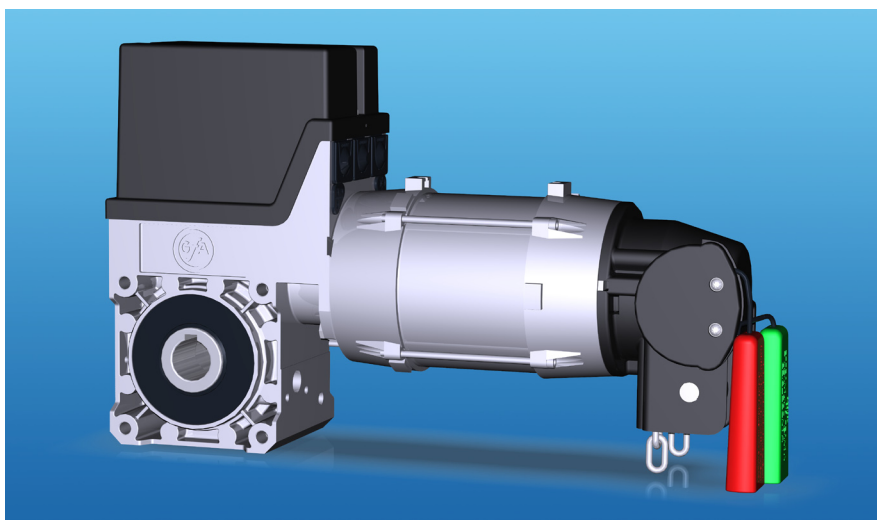


Ranger 51W, 61, 91 & 301

Drive Systems for counter-balanced Sectional Doors

- Range of output speeds and torques
- Available with either digital or mechanical limits
- Horizontal or vertical mounting
- Low level hand chain operation as standard
- Plug-connected control equipment
- Certified to BS EN 12453:2001-02



Application

The Ranger 51W, 61, 91 and 301 drive units are suitable for use on counter-balanced sectional overhead doors. The hard wearing precision made worm gears ensure a long, maintenance free life. The drive units are manufactured with a range of output speeds up to 24rpm and torques up to 140Nm.

Installation

The Ranger 51W, 61, 91 and 301 are all supplied with a torque mount as standard. The sealed gearbox allows the unit to be

installed either horizontally or vertically according to space limitations. In the event of a mains power failure the hand chain operator can be engaged from low level and used at any angle. The static holding capability of the gear means that no safety brake is required on sectional overhead doors. All Ranger drives are supplied with directly driven, built in limit switches to maintain a precise stopping position under all circumstances. As standard the drives are supplied with digital limits which allows adjustment of limits from ground level using a

compatible Guthrie Douglas control panel. The option of mechanical limits is still available.

Certification

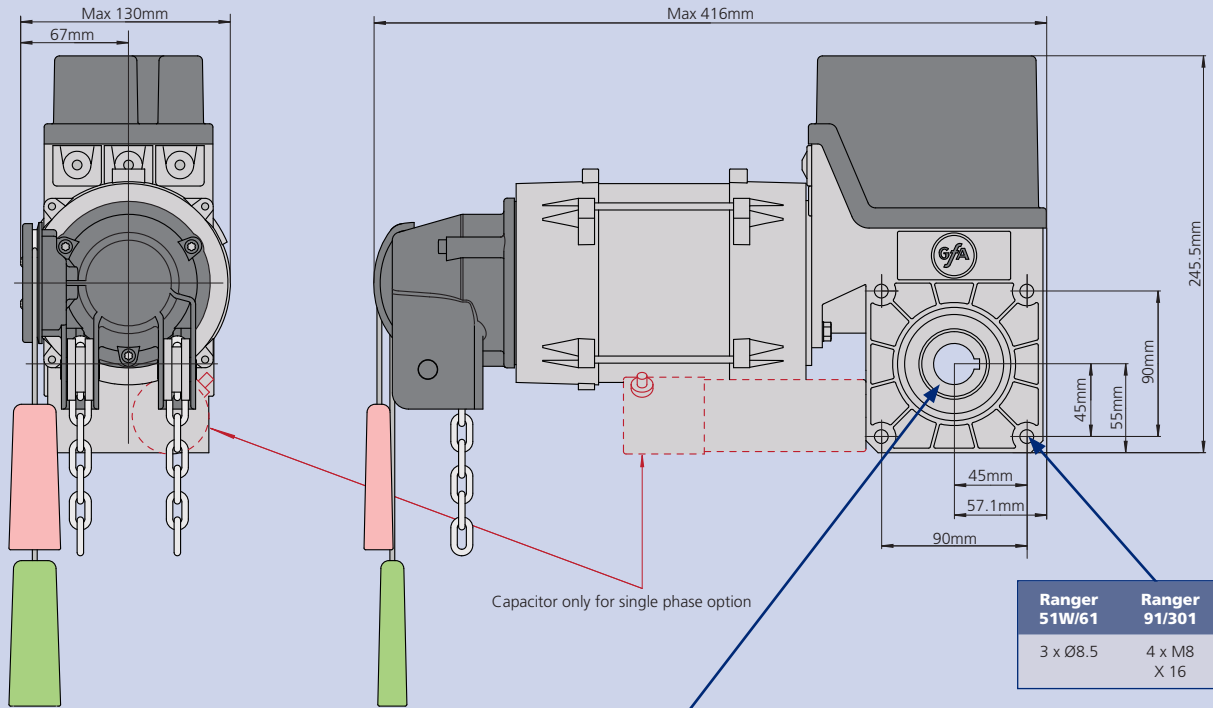
Using the Ranger series manufacturers can construct power operated shutter doors and grilles to meet the Product Standard BS EN 13241-1:2003 and to comply with the European Directives for Machinery, Construction Products, Low Voltage and EMC.



Technical Specification

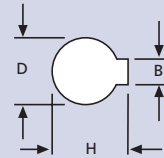
Model Part Reference		Ranger 61 RS06	Ranger 91 RS09	Ranger 301 RS14 E, D or C	Ranger 51W RS05W	Ranger 91 RS09W
Output torque	Nm	60	90	140	50	90
Output speed	rpm	24	24	21	24	24
Motor power	kW	0.37	0.37	0.45	0.37	0.45
Supply voltage	V	3x400/PE	3x400/PE	3x400/PE	1x230/N/PE	1x230/N/PE
Motor rated current	A	1.1	1.2	2.5	3.5	3.9
Frequency	Hz	50	50	50	50	50
Supply fuse (slow blow)	A	10	10	10	10	10
Max. holding torque	Nm	200	450	600	200	450
Max. door weight	Kg	200	400	600	200	400
Max cycles per hour	H ⁻¹	12	20	16	12	16
Limit switch capacity	Turns	20	20	20(E), 14(D&C)	20	20
Protection		IP 65	IP 65	IP 65	IP 65	IP 65
Weight	Kg	15	15	16	15	16
Shaft size		1"	1"	1"(E), 1¼"(D), 35mm(C)	1"	1"

Dimensions

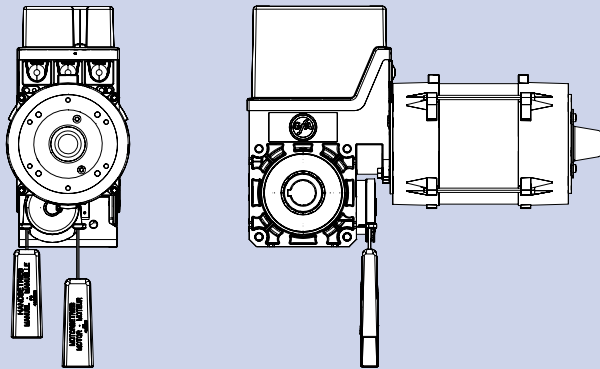


Shaft Detail (nominal)

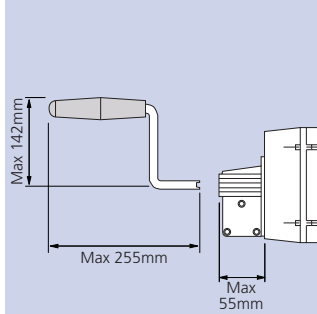
Shaft		D (mm)	B (mm)	H (mm)
1"	(E)	25.4	6.35	28.4
1 1/4"	(D)	31.75	6.35	34.7
35mm	(C)	35	6	38.3



Declutching Drive Unit

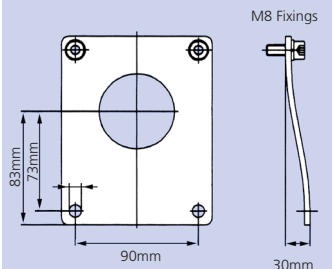


Manual Operator



Torque Mount

RK6 for sectional doors



Guthrie Douglas

Guthrie Douglas Limited
Unit 1, Titan Business Centre,
Spartan Close,
Warwick, UK. CV34 6RR

Tel: (+44) 01926 452 452
Fax: (+44) 01926 336 417
E-mail: sales@guthriedouglas.com



Assessed to ISO 9001
LPCB Cert. No. 193