

# Insulated Roller Shutter

(Direct Drive / Tube Operated)

   /indupart    /company/indupart-ltd

0161 432 6655 | [sales@indupart.co.uk](mailto:sales@indupart.co.uk) | [www.indupart.co.uk](http://www.indupart.co.uk)

Northern Sales, Distribution Centre & Production Warehouse  
The Door Centre, Discovery Park, Crossley Road, Stockport, SK4 5BW



Raising Standards  
Safety Assured

## Details

**Casing:** Galvanised steel casing & end plates as standard

**Bottom Slat:** Extruded aluminium with weather seal

**Guide Channels:** Steel guide channels with brush seals. Width of 80mm as standard.

## Operation

**Electric, Tubular Motor:** Tubular motor with key switch or outboard motor with push button control.

**Electric, Outboard Motor:** Three phase motor with push button control station as standard. Motors can be direct drive, inboard or outboard design. Final design will be project specific but all motors incorporate a chain manual override facility.

Numerous options such as group or remote control etc., available as required. Safety peripherals (i.e., safety edge, photoelectric cell, etc.) will be required for automatic closing or high-speed operation).

CE compliant to all applicable directives and regulations.

| Guide Height (mm) | Plate Size (mm) | Motor    |
|-------------------|-----------------|----------|
| 2195              | 355             | Tubular  |
| 3250              | 400             | Tubular  |
| 4000              | 450             | Tubular  |
| 3250              | 400             | Outboard |
| 4000              | 450             | Outboard |
| 5000              | 500             | Outboard |
| 6000              | 550             | Outboard |

## Curtain Slat

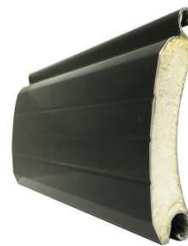
Double skinned 95mm steel slat with polyurethane insulating core.

**Finish:** Galvanised as standard. Powder coating and plastisol laminated finishes available on request.

|                       |   |
|-----------------------|---|
| <b>Weight per m2:</b> | 12.8kg  |
| <b>Maximum Width:</b> | 7000mm (tubular)<br>8000mm (outboard)                     |
| <b>Maximum Area:</b>  | 20m <sup>2</sup> (tubular)<br>35m <sup>2</sup> (outboard) |
| <b>Slat U-Value:</b>  | 1.1 W/m <sup>2</sup> K                                    |

## Applications

Industrial and commercial sites requiring large aperture coverage, and improved insulation properties from the shutter. Ideal for rapid rise / fast action opening and closing when in conjunction with Frequency Inverted motor.



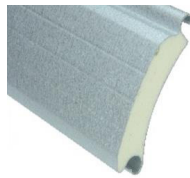
## Colour Chart



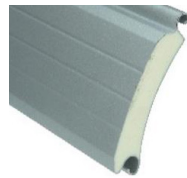
White  
RAL 9003



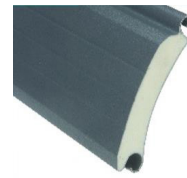
Goosewing Grey  
RAL 7038



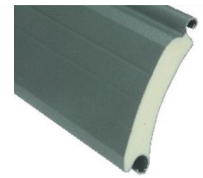
Galvanised



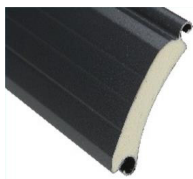
Silver  
RAL 9006



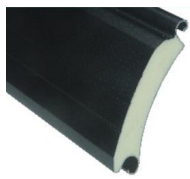
Dark Grey  
RAL 7011



Merlin Grey  
BS18 B25



Anthracite  
RAL 7016



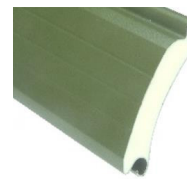
Black  
RAL 9005



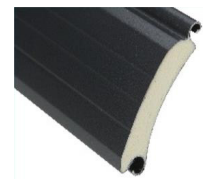
Red



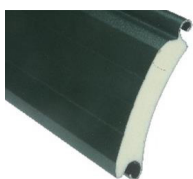
Moorland Green  
BS12 B21



Olive Green  
RAL 6003



Dark Green  
RAL 6009



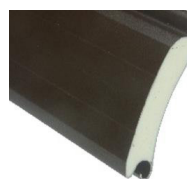
Juniper Green  
BS12 B29



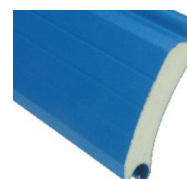
Chili Red  
RAL 3000



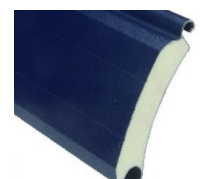
Golden Oak



Van Dyke Brown  
RAL 8014



Solent Blue  
BS18 E53



Sargasso  
RAL5003

**Please note:** The colours reproduced here are offered as guide only, because of differences in the printing process. It is possible that the finished product may be slightly different from those illustrated on this document. Please contact your nearest Indupart sales office for an accurate guide.