



Uninsulated Roller Shutter

(Tube Operated / Direct Drive)

   /indupart  /company/indupart-ltd

0161 432 6655 | sales@indupart.co.uk | www.indupart.co.uk

Northern Sales, Distribution Centre & Production Warehouse
The Door Centre, Discovery Park, Crossley Road, Stockport, SK4 5BW



**Raising Standards
Safety Assured**

Tube Operated Uninsulated Shutter

Steel shutter for commercial applications. 77mm curved steel slat with galvanised finish as standard and powder coating and plastisol finishes available on request. The maximum size of 29m² applies to tubular motor power; for larger sizes see outboard motor.



Applications

Commercial sites requiring high security, for openings up to 29m². See our Roller Shutter Product Ranger for larger Sizes. Punched and Perforated slats can be incorporated as required for full or partial vision.

Curtain Slat

Single skin 76mm curved steel with a thickness 0.7mm, 0.9mm, or 1.2mm, depending on overall opening size.

Finish: Galvanised finish as standard. Option to plastisol or powder coat.

Visible Face: 76mm
Weight per m²: 9.8kg (0.7mm thickness)
12.5kg (0.9mm thickness)
16.7kg (1.2mm thickness)

Maximum Width: 7000mm
Maximum Area: 29m²

Casing

Galvanised steel casing and end plates as standard. Optional fascia / custom design casings available on request.

Please Note: Reveal fix installations are supplied with a fascia as standard. Aluminium box also available.

Finish: Galvanised finish as standard. Option to powder coat any RAL / BS colour.

Details

Bottom Rail: Galvanised steel 'L' or 'T' shaped bottom rail.

Guide Channels: Galvanised steel guide channels. Width of 50mm, 65mm, 75mm or 100mm dependent on application. Windlocking guides and slat ends available.

Guide Channel Finish: Galvanised finish as standard. Option to powder coat any RAL / BS colour.

Guide Height	Plate Size
2695mm	305mm
4000mm	355mm
4500mm	400mm

All plate sizes shown as a guide only and may vary.

Operation

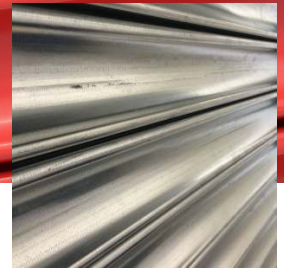
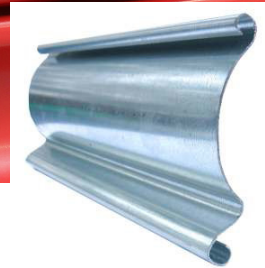
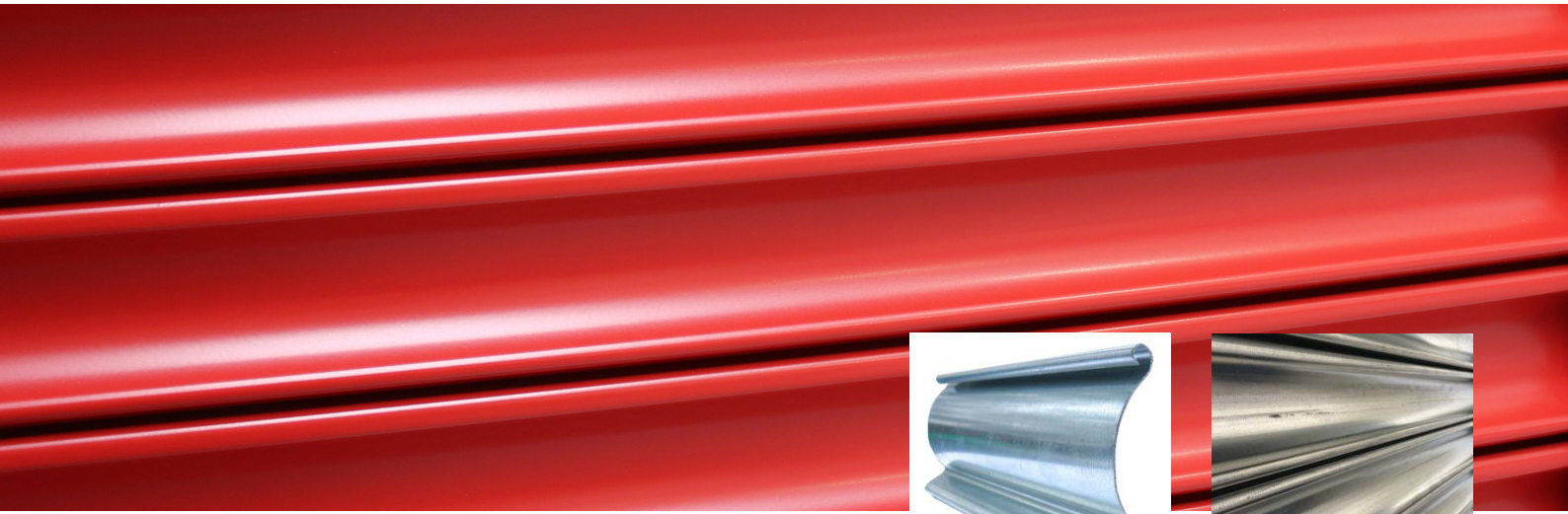
Electric, Tubular: Tubular motor with internal rocker or external key switch as standard and safety brake as appropriate to comply with legislation. Manual override facility and crank handle as an optional extra. Numerous control option variants such as group, remote or mobile phone activation.

Outboard motor and manual operation also available.

CE Compliant to all applicable directives and regulations.

Direct Drive Uninsulated Shutter

A steel shutter suitable for commercial sites. 77mm curved steel slat with galvanised finish as standard and powder coating and plastisol finishes available on request. Suitable for internal or external face or reveal fit. Also available with a tubular motor for smaller sizes.



Applications

Commercial sites requiring high security, for openings up to 29m². See our Roller Shutter Product Ranger for larger Sizes. Punched and Perforated slats can be incorporated as required for full or partial vision.

Curtain Slat

Single skin 76mm curved steel with a thickness 0.7mm, 0.9mm, or 1.2mm, depending on overall opening size.

Finish: Galvanised finish as standard. Option to plastisol or powder coat.

Visible Face: 76mm
Weight per m²: 9.8kg (0.7mm thickness)
12.5kg (0.9mm thickness)
16.7kg (1.2mm thickness)

Maximum Width: 12000mm
Maximum Area: 72m²

Casing

Galvanised steel casing and end plates as standard. Optional fascia / custom design casings available on request.

Please Note: Reveal fix installations are supplied with a fascia as standard. Aluminium box also available.

Finish: Galvanised finish as standard. Option to powder coat any RAL / BS colour.

Details

Bottom Rail: Galvanised steel 'L' or 'T' shaped bottom rail.

Guide Channels: Galvanised steel guide channels. Width varies dependent on application, either 50mm, 65mm, 75mm or 100mm. Windlocking guides available. Guide channels are bolted onto angle or box section, depending on the application.

Guide Channel Finish: Galvanised finish as standard. Option to powder coat any RAL / BS colour.

Guide Height
2200mm
3650mm
6000mm

Plate Size
305mm
355mm
400mm

All plate sizes shown as a guide only and may vary.

Operation

Electric: Three phase motors with push button control station as standard. Can be direct drive, inline or chain drive design. All motors incorporate a chain manual override facility as standard. Numerous control option variants such as timed closure, group, remote control or mobile phone activation.

CE Compliant to all applicable directives and regulations.

