



# Introducing Our New Parts

 **indupart.co.uk**

0161 432 6655 | [sales@indupart.co.uk](mailto:sales@indupart.co.uk)



050021

### 450mm Dock Bumper

Material: Polythene  
Unit: Piece (1)  
Dimensions: 248mm x 450mm x 53mm

! Suitable for:  
Dock Bumper: 050020



050032

### 750mm Dock Bumper Insert

Material: Rubber  
Unit: Piece (1)  
Dimensions: 244mm x 740mm x 51mm

! Suitable for:  
Dock Bumper: 050030



050022

### 450mm Dock Bumper Insert

Material: Rubber  
Unit: Piece (1)  
Dimensions: 244mm x 440mm x 51mm

! Suitable for:  
Dock Bumper: 050020



050033

### 750mm Dock Bumper Brackets

Material: Galvanised Steel  
Unit: Piece (1)  
Dimensions: 275mm x 757mm x 85mm

! Suitable for:  
Dock Bumper: 050030



050023

### 450mm Dock Bumper Bracket

Material: Galvanised Steel  
Unit: Piece (1)  
Dimensions: 276mm x 456mm x 85mm

! Suitable for:  
Dock Bumper: 050020



108025

### Crawford Slide Bolt

Material: Galvanised Steel / Plastic Cover  
Unit: Piece (1)



050031

### 750mm Dock Bumper Insert

Material: Polythene  
Unit: Piece (1)  
Dimensions: 248mm x 750mm x 51mm

! Suitable for:  
Dock Bumper: 050030



208090

### 750mm Dock Bumper Insert

Material: EPDM Rubber  
Unit: Linear Metre

! Please Note:  
Does not include adhesive

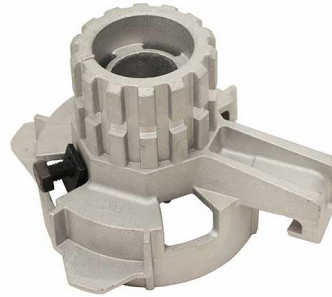


**406010**

**Winder for Crawford 'T' Spring**

Material: Cast Aluminium  
Unit: Piece (1)  
Shaft Diameter: 35mm (Round)

! Suitable for:  
Spring: 95mm



**407055**

**Winder for Crawford 'M' Spring**

Material: Cast Aluminium  
Unit: Piece (1)  
Shaft: Hexagonal

! Suitable for:  
Spring: 152mm  
Suitable for:  
Tension Device: 407040



**406015**

**Winder for Crawford 'T' Spring**

Material: Cast Aluminium  
Unit: Piece (1)  
Shaft: Hexagonal

! Suitable for:  
Spring: 95mm



**506040**

**Crawford Adjustable Bearing Plate**

Material: Galvanised Steel  
Unit: Piece (1)  
Shaft Diameter: 35mm (Round)

! Suitable for:  
Hollow Shaft: 501088



**407045**

**Crawford Spring Clip**

Material: Galvanised Steel  
Unit: Piece (1)



**506045**

**Crawford Adjustable Bearing Plate**

Material: Galvanised Steel  
Unit: Piece (1)  
Shaft: Hexagonal



**407050**

**Winder for Crawford 'M' Spring**

Material: Cast Aluminium  
Unit: Piece (1)  
Shaft Diameter: 35mm (Round)

! Suitable for:  
Spring: 152mm



**506050**

**Crawford Adjustable Support Plate**

Material: Galvanised Steel  
Unit: Piece (1)  
Shaft: Hexagonal

RHW

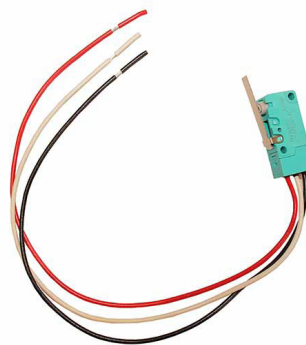


507015

### Crawford Spring Brake Device

Material: Cast Aluminium  
Unit: Piece (1)  
Shaft Diameter: 35mm (Round)

! Suitable for:  
Spring: 95mm



508025

### Cut Out Switch

Unit: Piece (1)  
Rating: IP67  
Cable Length: 300mm

! Suitable for:  
Springs: 95mm, 152mm

LHW



507016

### Crawford Spring Brake Device

Material: Galvanised Steel  
Unit: Piece (1)  
Shaft Diameter: 35mm (Round)

! Suitable for:  
Spring: 95mm

LHW



508030

### Crawford Spring Brake Device

Material: Galvanised Steel  
Unit: Piece (1)  
Shaft: Hexagonal

! Suitable for:  
Spring: 152mm

LHW



507090

### Crawford Spring Brake Device

Material: Galvanised Steel  
Unit: Piece (1)  
Shaft: Hexagonal

! Suitable for:  
Spring: 95mm

RHW



508035

### Crawford Spring Brake Device

Material: Galvanised Steel  
Unit: Piece (1)  
Shaft: Hexagonal

! Suitable for:  
Spring: 152mm

RHW



507095

### Crawford Spring Brake Device

Material: Cast Aluminium  
Unit: Piece (1)  
Shaft Diameter: 35mm (Round)

! Suitable for:  
Spring: 95mm



607070

### 16/3 Cable Drum

Material: Plastic  
Unit: Pair (2)  
Shaft Diameter: 32mm (Hexagonal)  
Application: Standard Lift





**707410**

### Crawford Track Adaptor

Material: Galvanised Steel  
Unit: Piece (1)  
Length: 1200mm



**902520**

### 2 Position Selector Switch Kit

Unit: Piece (1)  
Mounting Type: Control panel

! Suitable for:  
Control Panels: 902110,  
902130, 902160



**801007**

### Crawford Chain Hoist

Material: Plastic / Steel Components  
Unit: Piece (1)  
Shaft: Hexagonal  
Ratio: 1:5

! Required:  
Hand Chain: 801009



**902525**

### 2 Position Key Switch

Unit: Piece (1)  
Mounting Type: Control panel

! Suitable for:  
Control Panels: 902110,  
902130, 902160

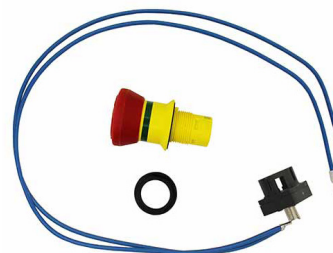


**801008**

### Crawford Chain Hoist

Material: Plastic / Steel Components  
Unit: Piece (1)  
Shaft Diameter: 35mm (Round)  
Ratio: 1:5

! Required:  
Hand Chain: 801009



**902530**

### Latching Stop Push Button Kit

Unit: Piece (1)  
Mounting Type: Control panel

! Suitable for:  
Control Panels: 902110,  
902130, 902160



**801009**

### Crawford Hand Chain

Material: Steel  
Unit: Linear metre

! Suitable for:  
Chain Hoists: 801007,  
801008



**902975**

### KMG-Lite Force Tester

Unit: Piece (1)  
Measurement Range: 25N to 1600N  
Measurement Accuracy: Typ.<10N  
Power Supply: 3x 1.5V AA Batteries  
Battery Duty: >100 Hours



902980

### KMG-Lite Space Set

Unit: Kit (1)  
Tripod: Vertical doors  
Spacer Bars: Horizontal doors & gates  
Adjustment Range: 30cm and 50 cm

! Suitable for:  
Force Tester: 902975

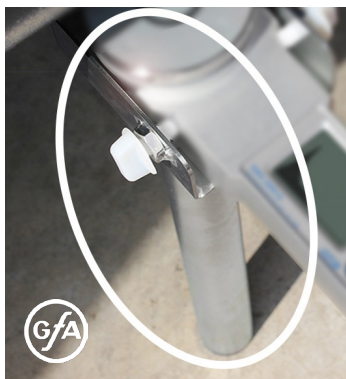


902985

### KMG-2000-G Force Tester

Unit: Piece (1)  
Measurement Range: 25N to 2000N  
Measurement Accuracy: Typ. <10N  
Power Supply: 2x 1.2V NiMH rechargeable batteries  
Interface: USB  
Internal Memory: 500 single measurement

! Suitable for:  
Force Tester: 902975

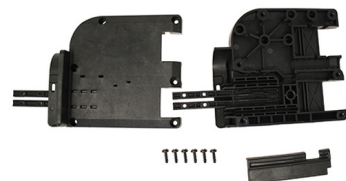


902990

### Armset for KMG-2000

Material: Galvanised Steel  
Unit: Piece (1)

! Suitable for:  
Force Tester: 902975



801009

### Plastic End Piece - Wireless Impulse

Unit: Piece (1)

! Suitable for:  
Hormann Doors: V5015SEL, V6030SEL



960010

### Radio Crash Switch

Unit: Piece (1)

! Suitable for:  
Hormann Doors: V5015SEL, V6030SEL



960020

### Radio Crash Receiver

Unit: Piece (1)

! Suitable for:  
Hormann Doors: V5015SEL, V6030SEL



920030

### Optical Transmitter

Unit: Piece (1)  
Application: Bearing Side

! Suitable for:  
Hormann Doors: V5030SE, V6030SE, V6030SEL



960040

### Optical Receiver

Unit: Piece (1)  
Application: Operator Side

! Suitable for:  
Hormann Doors: V5030SE, V6030SE, V6030SEL



**960050**

### Optical Admission

Unit: Piece (1)  
Required Parts:  
Receiver & Transmitter: 960030,  
960040

! Suitable for:  
Hormann Doors: V5030SE,  
V6030SE, V6030SEL



**960090**

### Complete Wind Lock Roller 23

Unit: Piece (1)

! Suitable for:  
Hormann Doors: V5030SE,  
V6030SE, V6030SEL



**960060**

### Complete Wind Lock Roller 23

Unit: Piece (1)

! Suitable for:  
Hormann Doors: V5030SE,  
V6030SE, V6030SEL



**960100**

### Rubber Return Pulley

Unit: Piece (1)

! Suitable for:  
Bungee Cord: 960110  
Hormann Doors: V5030SE,  
V6030SE, V6030SEL



**960070**

### Photocell Housing

Unit: Piece (1)

! Suitable for:  
Photocell: 960080  
Hormann Doors: V5030SE,  
V6030SE, V6030SEL



**960110**

### Bungee Cord

Unit: Linear Metre

! Suitable for:  
Hook: 960120  
Hormann Doors: V5030SE,  
V6030SE, V6030SEL



**960080**

### Photocell 1-Way with Cable

Unit: Piece (1)  
Required Part:  
Photocell Housing: 960070 (x2)

! Suitable for:  
Hormann Doors: V5030SE,  
V6030SE, V6030SEL



**960120**

### Spiral Hook

Unit: Piece (1)

! Suitable for:  
Bungee: 960110  
Hormann Doors: V5030SE,  
V6030SE, V6030SEL

# New Doors

Indupart now offers the following doors and many more. Find out more about each door on our brand new website.

## Cube Compact Door



## Foodsafe High Speed Door



## Roller Garage Door



## Sprint Sectional Overhead Door



960130

### Complete Wind Lock Roller 23

Unit: Piece (1)



Suitable for:  
Hormann Doors: V6030SEL



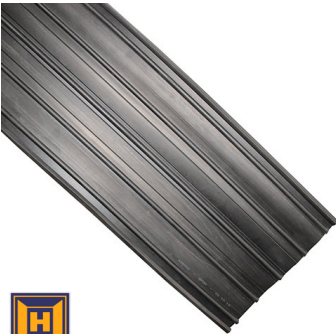
960140

### Complete Rubber Cover

Unit: Piece (1)



Suitable for:  
Hormann Doors: V6030SEL



960150

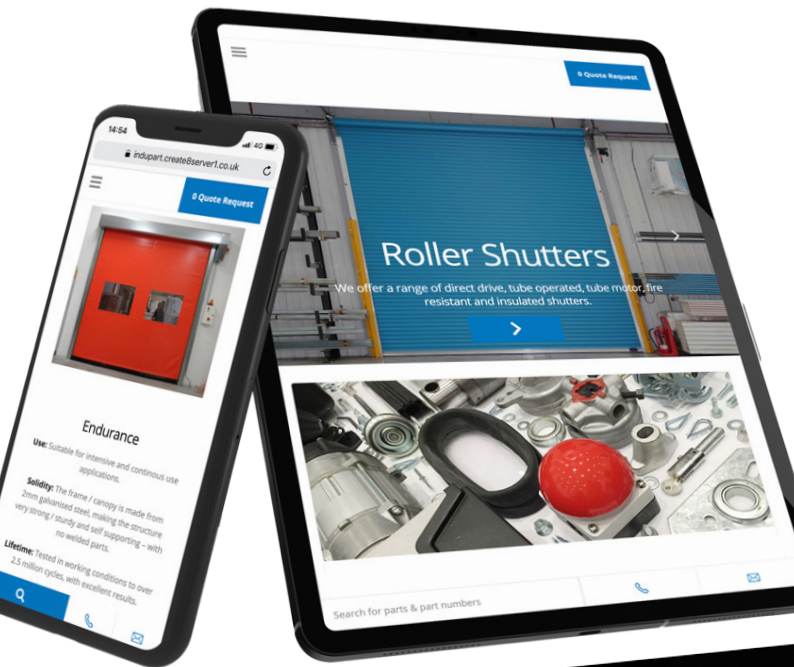
### Rubber Profile Type 90

Unit: Linear metre



Suitable for:  
Hormann Doors: V6030SEL





Our New  
Website is LIVE

www.indupart.co.uk